

Behavioral Health Bridges for Reentry for the Carceral Population: Part 2

Thursday, April 24th

10:45-12:15

jacksoncareconnect.org



Housekeeping

Take care of yourself today.



BATHROOM
LOCATION



COFFEE
TEA/WATER



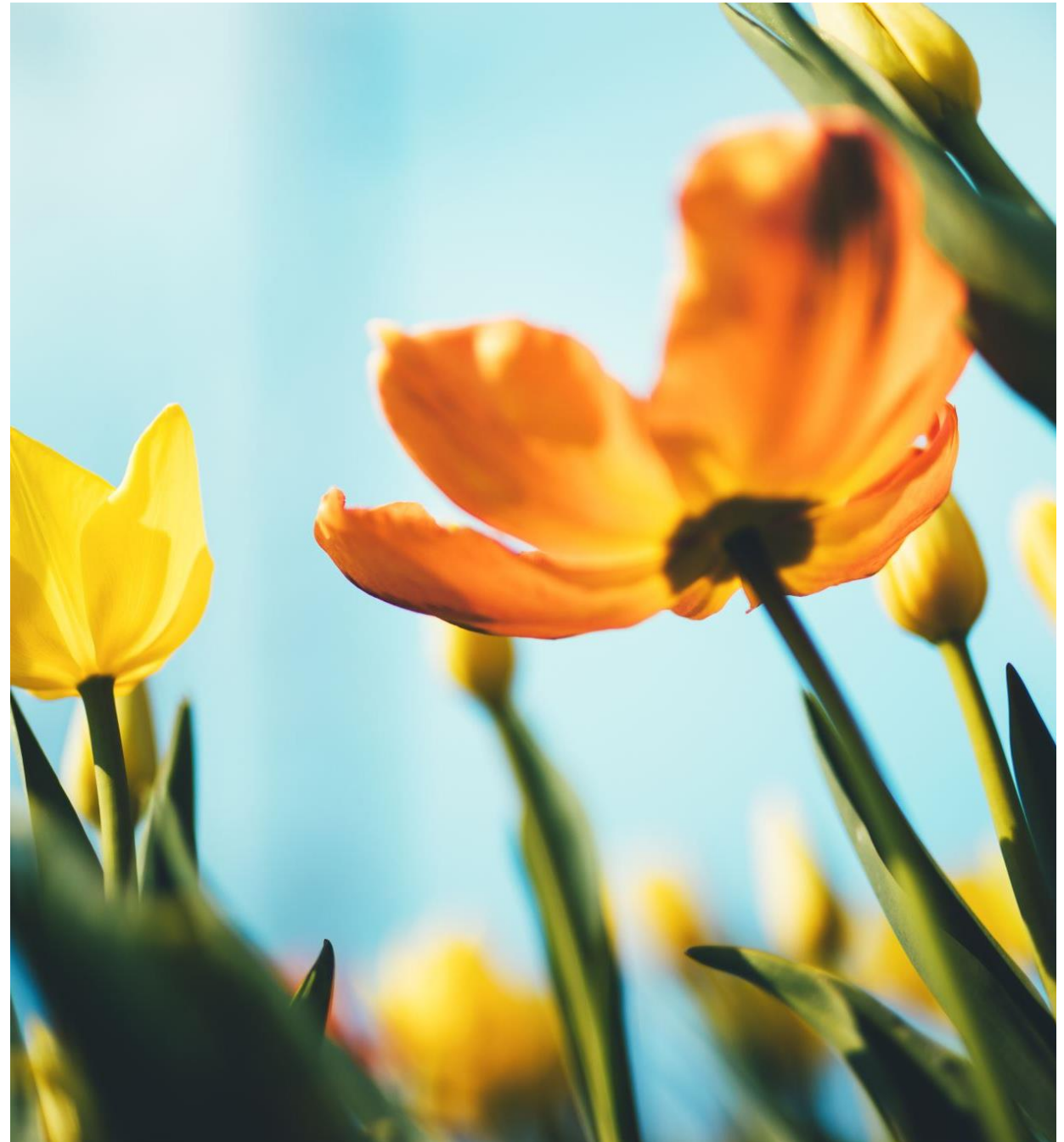
BREAKS AND
SELF-CARE



CEU'S

Session Invitations

- ✓ Participate at the level that is most comfortable
- ✓ Be in a learning mindset
- ✓ Be present for these 90 minutes with minimal distractions
- ✓ Be courteous of any interpretation services



Welcome Community!

Share with each other:

- Why is it important to you to provide care to people in the carceral system?
- What drew you to this session?
- What would you like to leave with?



Behavioral Health Bridges for Reentry for the Carceral Population

Focus on new and innovative BH supports and services for Adults in Custody at the jail and Transition center. Discussion of Deflection in Jackson County.

Jackson County Sheriff's Office

- Vicky Armstrong
- Josh Aldrich

City of Medford Police Department

- Rebecca Pietila

Addictions Recovery Center

- Ben Spence

The Pathfinder Network

- Leticia Longoria-Navarro

Jackson County Community Justice

- Kiki Parker-Rose

Reclaiming Lives Recovery Café

- Brandon Orr

Learning Objectives

- 1. Gain an understanding of how relationship building in our community leads to innovative behavioral health supports for the carceral population .**
- 2. Explore the impact BH supports and services for the carceral population has on outcomes for members served, on the workforce in the carceral setting, and on the community.**

ONE POWERFUL QUESTION



Jackson County Deflection Program

Behavioral Health Treatment in lieu of Criminal-
Legal Involvement

- Capt. Josh Aldrich, JCSO Jail Commander
- Lt. Rebecca Pietila, MPD Community Engagement Division
- Ben Spence, Manager of Justice Programs, Addictions Recovery Center
- Vicky Armstrong, Deflection Coordinator




Agenda for Today

- HB 4002 – Restoring Criminal Penalties for Drug Possession
- Behavioral Health Deflection Funding – Criminal Justice Commission
- Bringing Deflection to Jackson County – Planning and Governance
- Our Program
 - The Role of Law Enforcement
 - Our Behavioral Health Partners
- Implementation and expansion
- Current Status and Statistics
- Questions and Discussion



HB 4002

Restoring Criminal Penalties for Drug Possession



The Landscape – Then and Now

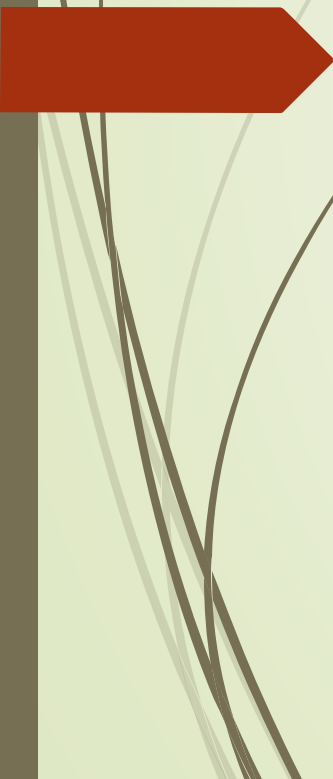
Measure 110 – Feb 2021

- Penalties for most PCS offenses were reduced to a new Class E violation punishable with a maximum \$100 fine – no jail, supervision or other criminal penalties could be imposed.
 - Allowed a person charged with a Class E violation to obtain a treatment needs screening or treatment contact within 45 days, provide proof to the court, and have their charge dismissed.
 - Required LE to provide information on how to obtain a screening when issuing a citation for a Class E violation
 - Established a \$45 minimum fine
 - Required all Class E violations to be filed in circuit courts and prohibited penalties for failing to appear in court.

HB 4002 – Sept 2024

- Repeals the Class E violation and replaces it with a new misdemeanor crime of unlawful possession of a controlled substance, also called the **Drug Enforcement Misdemeanor (DEM)**. This new misdemeanor has 3 unique provisions:
 - The possibility of a **pre-booking deflection program**, which if completed leads to no criminal charges being filed.
 - A default to probation with mandatory addiction treatment, with no jail time or fines. If probation is violated or waived, it could lead to up to 180 days of jail time.
 - After any probation or jail time ends, criminal records are automatically expunged, either within 90 days or three years, depending on the sanctions.

HB 4002, Section 36 (1)

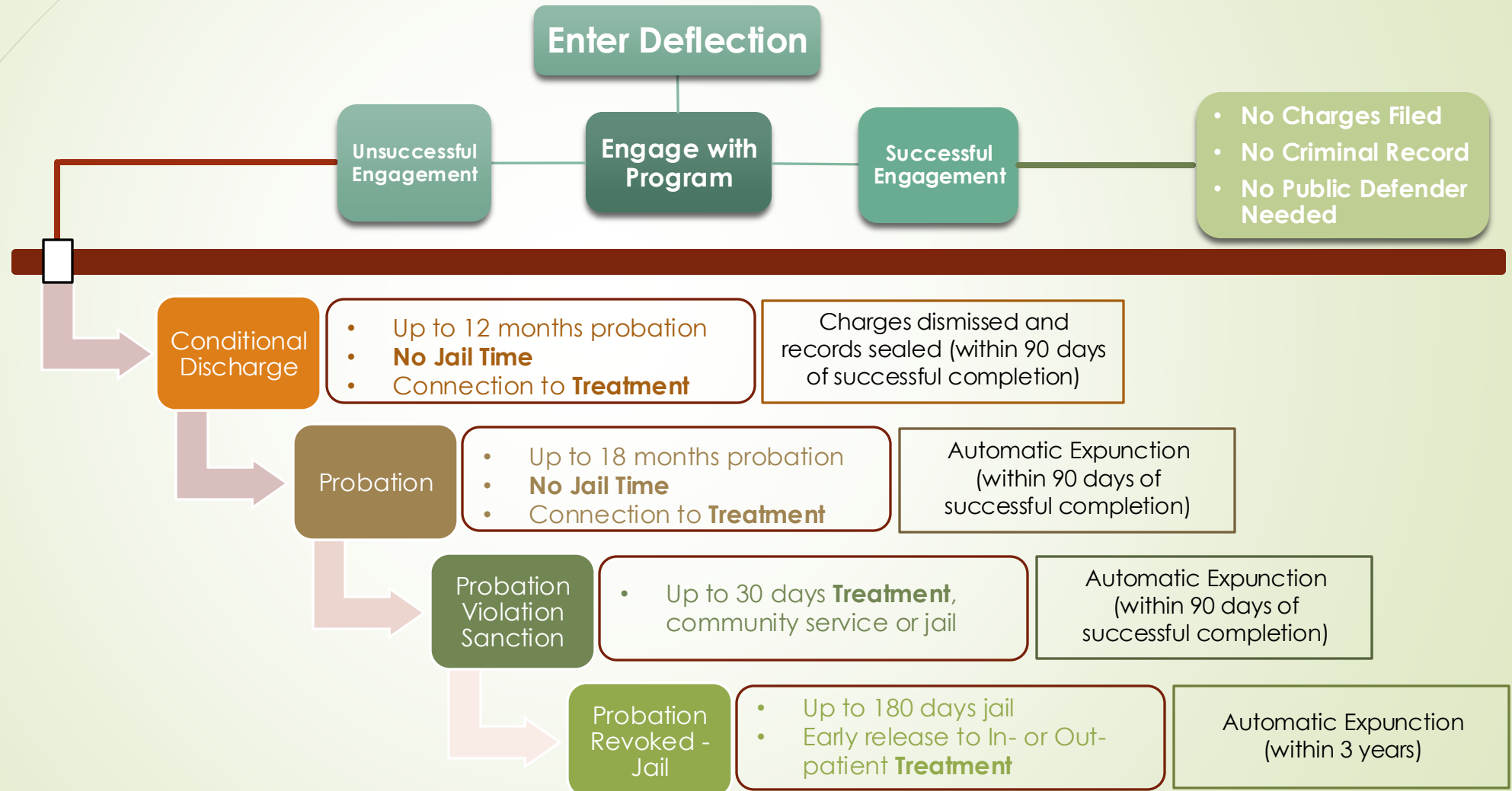


“Law enforcement agencies in this state are encouraged to, *in lieu of citation or arrest, or after citation or arrest but before referral to the district attorney*, refer a person to a deflection program when the person is suspected of committing, or has been cited or arrested for, unlawful possession of a controlled substance constituting a drug enforcement misdemeanor under section 35 of this 2024 Act.”

Emphasis added

HB 4002 Framework: Law Enforcement Contact ➔ Treatment

Law Enforcement Contact for Drug Enforcement Misdemeanor – Deflection Offered and Accepted





Behavioral Health Deflection Funding

Criminal Justice Commission – IMPACTS Grant



Current Funding

Statewide

- HB 5204 appropriated \$20.7 million for Deflection Programs; this funding is through June 2025
- CJC funded technical assistance through the Addiction Medicine department at OHSU
- CJC collaborated with research partners at OHSU to develop a data collection system on the web-based platform REDCap.

Jackson County

- The CJC developed and administered a formula that allocated funding to participating counties
- Jackson County received a total of \$1.2 million for planning, training, and implementation of the Deflection Program
- All recipients of Behavioral Health Deflection grant funds must participate in the statewide data collection system

Ongoing Funding = Ongoing Deflection

- Governor Kotek's proposed budget includes an allocation of \$40 million for Deflection Programs
- Effective program infrastructure in place
- SB 782
 - Proposes the framework for funding for the next biennium (2025-2027)
 - Is currently before the Joint Committee on Addiction and Community Safety Response
- Anticipate grant process through CJC IMPACTS Grant Process



With ongoing funding, Deflection opportunities and treatment will continue into the next biennium.



Bringing Deflection to Jackson County

Planning and Governance



Planning and Governance



- A Governance group was convened to submit the application for funding and to plan, implement, and provide oversight for the Program.
- The Deflection Program Partners in Jackson County:
 - **Jackson County District Attorney**
 - Ashland Police Department
 - **Jackson County Sheriff's Office**
 - Host of the Deflection Coordinator
 - **Medford Police Department**
 - **Addictions Recovery Center**
 - **OnTrack Rogue Valley**
 - Jackson County Circuit Court
 - Jackson County Community Justice
 - **Jackson County Health and Human Services**

Bold indicates legislatively mandated participants

Jackson County's Journey: From Law to Implementation





Jackson County Deflection Program

- ❖ Definition and History
- ❖ Pathways to Deflection
- ❖ The Role of Law Enforcement
- ❖ Our Behavioral Health Partners



Jackson County Deflection Program

- ❖ Definition and History
- ❖ Pathways to Deflection
- ❖ The Role of Law Enforcement
- ❖ Our Behavioral Health Partners



Deflection History and Evolution

- Diversion programs expanded across the country in the 1960s
- Treatment courts have been in operation since the 1970s
- **Deflection** is a move further upstream – an intervention **before** an individual enters the criminal-legal system.
 - Programs are relatively new; best practices are still evolving
 - Provide path to treatment for individuals with behavioral health concerns
 - Goal of averting the need for an emergent response from law enforcement or health services
- Some benefits of Deflection programs:
 - Create new access pathway to treatment
 - Break costly cycles of justice-system involvement
 - Improve collaboration between law enforcement and community-based organizations
 - Improve public health and safety

Pathways to Deflection

Pathway	Target Populations
<u>Self-Referral</u> : an individual voluntarily initiates contact with a first responder for treatment referral	Individuals with SUDs
<u>Active Outreach</u> : a first responder identifies individuals with SUDs and refers them to engage with treatment	Individuals in crisis or with non-crisis MHDs and/or SUDs or who are homeless
<u>Naloxone Plus</u> : specific outreach to individuals with recent opioid overdose	Individuals with OUD
<u>First Responder and Officer Referral</u> : identifies individuals for referral during routine activities	Individuals in crisis or with non-crisis MHDs and/or SUDs or in situations involving homelessness, theft, or prostitution
★ <u>Officer Intervention</u> : law enforcement offers referral to treatment in lieu of citation or arrest when a crime is present	Individuals in crisis or with non-crisis MHDs and/or SUDs or in situations involving homelessness, theft, or prostitution
<u>Community Response</u> : a team of community-based behavioral health professionals provides referral as part of call for service response	Individuals in crisis or with non-crisis MHDs and/or SUDs, or in situations involving homelessness or low-level conflicts

Deflection Definition and Purpose

Definition per HB 4002 (2024):

Deflection is a collaborative program between law enforcement agencies and behavioral health entities that assists individuals who may have substance use disorder, another behavioral health disorder or co-occurring disorders, to create community-based pathways to treatment, recovery support services, housing, case management or other services.

Purpose:

1. Address the need for more deflection programs to assist individuals whose behavioral health conditions, including substance use disorder, lead to interactions with law enforcement, incarceration, conviction and other engagement with the criminal justice system.
2. Track and report data concerning deflection program outcomes in order to determine the best practices for deflection programs within this state.

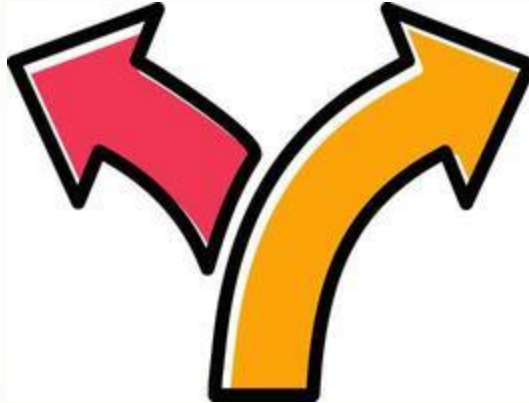
The Role of Law Enforcement:

❖ Drug Enforcement Misdemeanor (DEM)

Traditional Criminal-Legal Pathways

Citation or Arrest:

- Jail
- Court appearances
- Fines and fees
- Criminal record



A New Pathway:

Alternative to Criminal-Legal system involvement

Another doorway to treatment:

- Connection to Peers
- SUD Assessment
- Treatment/Counseling
- SDoH Supports

Deflection is a voluntary program at all touchpoints in the system:

- Counties have the choice to create a Deflection Program
- Law Enforcement Agencies within counties that offer Deflection choose whether or not to participate
- Eligible individuals contacted by law enforcement must agree to the program

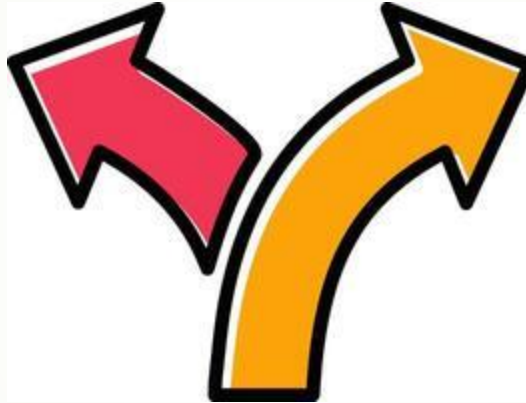
The Role of Law Enforcement:

❖ Drug Enforcement Misdemeanor (DEM)

Traditional Criminal-Legal Pathways

Citation or Arrest:

- Jail
- Court appearances
- Fines and fees
- Criminal record



A New Pathway:

Alternative to Criminal-Legal system involvement

Another doorway to treatment:

- Connection to Peers
- SUD Assessment
- Treatment/Counseling
- SDoH Supports

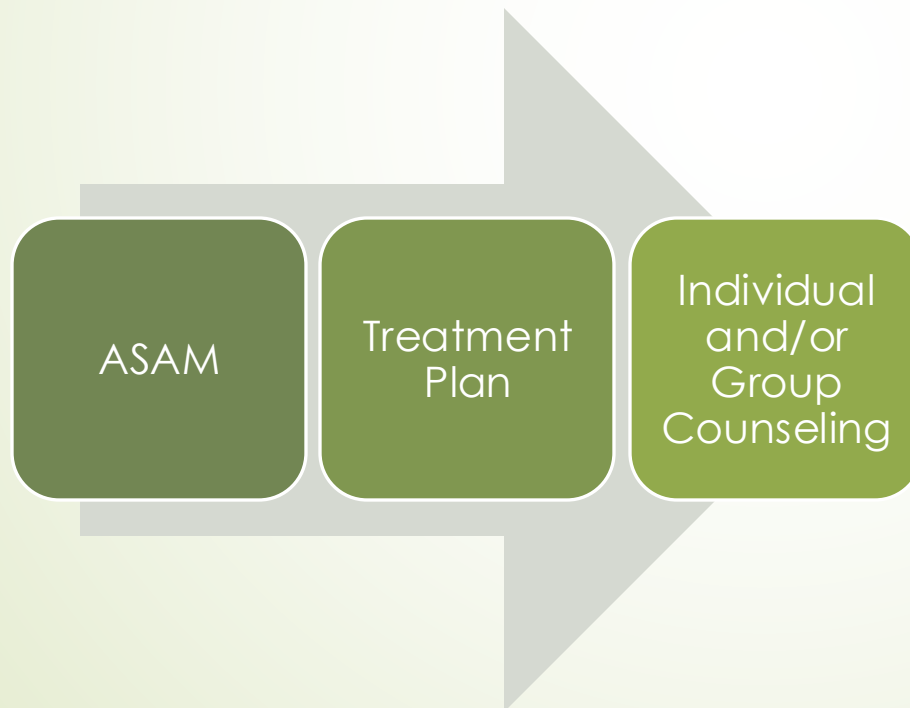
Deflection is a voluntary program at all touchpoints in the system:

- Counties have the choice to create a Deflection Program
- Law Enforcement Agencies within counties that offer Deflection choose whether or not to participate
- Eligible individuals contacted by law enforcement must agree to the program

Our Behavioral Health Partners: ARC and OnTrack

❖ Deflection is a Behavioral Health program

5 Treatment Contacts



5 Peer Contacts



Deflection Peers: Essential for Success



A word cloud illustrating the qualities and roles of deflection peers. The most prominent words are 'peer', 'support', 'relationship', 'advocate', 'guide', and 'trust'. Other visible terms include: sympathetic, optimism, passionate, friendly, nurture, partner, encouraging, attitude, warm-hearted, connector, acceptance, compassionate, guidance, cheerleader, cheer, warm, inspiring, gentle, resources, benefit, encouragement, kind, reassurance, direction, inspiration, ally, mentor, vision, help, relatable, navigator, information, influence, connection, understand, empathetic, friend, alongside, selfless, supportive, accountability, motivation, empathy, understanding, compassion, expertise, dedicated, responsible, motivate, share, listener, insight, patient, shepherd, present, encourage, accountable, committed, buddy, resource, helper, and patient.



Program Timeline

Implementation and Expansion

Program Implementation and Expansion

Timeline:

October. 8, 2024: Program Implementation

Expansion Strategies:

October 2024: Adjust Operational Hours

November 2024: Begin adding additional officers

December 2024: Change eligibility for P&P

January 2025: Revert to initial Operational Hours

Modify Eligibility (SUD nexus)

New LE Agencies added

February 2025: New LE Agencies added

Municipal Court added

March 2025: New LE Agencies added

April 2025: Planning expansion to accommodate 24/7 Deflection

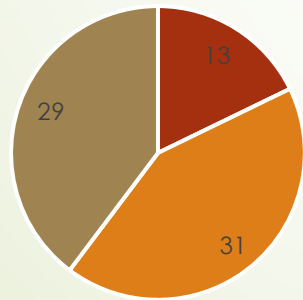


Current Status

Data and Statistics

Current Status

Deflection Program Status
as of April 18, 2025



■ Currently Engaged ■ Successful Completion ■ Unsuccessful Completion

Deflection Offered:

76

Monthly Average:

12

Deflection Accepted:
(96%)

73

Completions:

60 (82%)

Successful:

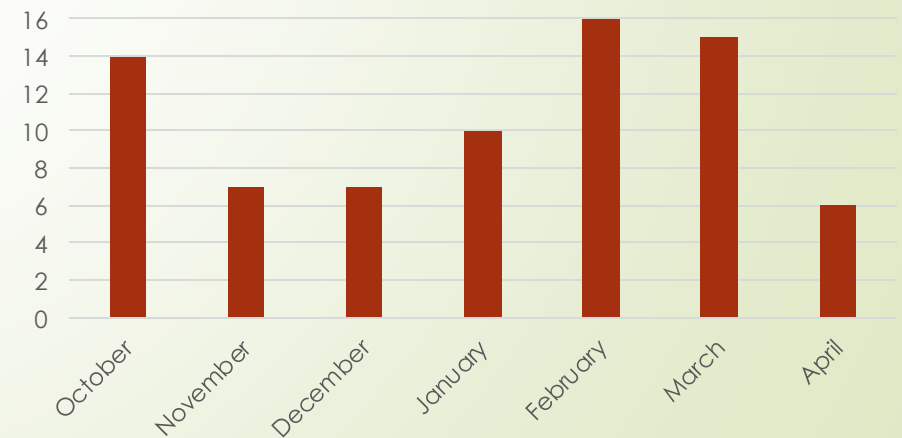
31 (52%)

Unsuccessful:

29 (48%)

Deflections by Month
Currently in Program:

13





HB 4002: Statewide Deflection Programs

Definition:

“a collaborative program between law enforcement agencies and behavioral health entities that assist individuals who may have substance use disorder, another behavioral health disorder or co-occurring disorders, to create community-based pathways to treatment, recovery support services, housing, case management or other services.”

- Counties are encouraged, but not required, to engage with Deflection programs
- 28 counties have opted to create Deflection programs
- Each Deflection programs is distinct – no two are the same. This includes:
 - Eligibility requirements
 - Program goals
 - Outcomes/Success criteria
 - Point of intervention within the Criminal-Legal pathway
- There is ongoing work at state and local levels to refine programs to afford more Deflection opportunities



Questions and Discussion



Jackson County Community Justice

Kiki Parker-Rose

Director



Mission and Values

Provide Public Safety Through Accountability and Change

Integrity: We hold ourselves accountable, accepting responsibility for our work and making ethical, transparent and well-intentioned decisions for the good of our department and our community

Trust: We value each person as an individual, and build relationships through responsible actions and authentic communication

Consistency: We engage in conscious efforts to infuse each action with intention and purpose, thus removing uncertainty

Respect: We treat our co-workers and the public courteously and fairly valuing their beliefs, culture and diversity

Teamwork: Our team members bring a variety of backgrounds, cultures and experiences that help us problem solve and be innovative as an organization and to collaborate with our community partners and citizens to carry out the mission of our department.



Adult Services



▶ Parole and Probation:

- 1,841 Adults on Supervision
- Complete Assessments
- Develop Case Plans
- Engage in Structured Skill Building
- Conduct Field Work
- Impose Interventions, Sanctions and Incentives

▶ Programs:

- DUI Assessment and Monitoring
- GPS/Home Custody
- Community Service Program

▶ Services:

- Housing Assistance
- Employment Readiness
- Medically Assisted Treatment (MAT)
- Substance Use Disorder Services (SUDS)
- Peer Support
- Behavioral Health Services
- Sex offender treatment
- Polygraph
- Victim Advocate



Juvenile Services



- ▶ Probation/Diversion/Intake
 - Youth Referrals: 550
 - Youth on Supervision: 125
- ▶ Detention
 - Beds: 16
 - Admissions: 218
 - Average: 14.3
- ▶ Barriers 2 Bridges Residential Program
 - Beds: 10
 - Placed: 51
 - Average: 8.5
- Case/Service Planning
- Assessment and Evaluation
- Individual/Group Skill Development
- Restorative Practices
- Mental Health Counseling
- Family Counseling
- Substance Use Counseling
- Peer Support
- Educational and Vocational Services
- Recreational and Cultural Activities
- Transitional/Aftercare Services

Transition Center





What is the Transition Center?

Formerly referred to as the “Work Center”

Sanction/Work Crew

Beds:

25 Males

15 Females

Work Crew Program:

- 2024 Work Crew Stats
- 2,438 clients participated
- 568 Work Crews deployed



Transitional Housing

Jackson County's investment specific to the unhoused

Beds:

- 50 Males
- 15 Females

2024 Trans Housing Stats

- 15,993 days



Transitional Care Program (TCP)

Beds:

- 5-month program
 - Nine Males
 - Six Females

Curriculum Targets:

- Criminogenic Needs and Risks
- Substance Use Disorder
- Cognitive Behavioral
- Employment Services
- Exceptional score on Department of Corrections Review





Federal Clients

Beds:

- Ten beds for Institutional Transfer (IT) and Public Law clients
- Five beds for home confinement (outside the facility)
- Ten beds for pre-trial clients

Case Management Services

All Clients at TC:

- Case Management
- OHP Enrollment
- Food Stamps
- Oregon ID / Drivers License
- Birth Certificate
- Healthcare Appointments / Assistance
- Medication Management — Partner with Genoa pharmacy



Community Partners/Services

➤ **Housing Resources**

- Partner with Access and Oxford Housing

➤ **Employment Services**

- Partnership with Goodwill Good Works
- Contract with Talent Make City


➤ **Medicated Assisted Treatment**

- Boulder Care
- Medford Treatment Center
- 203 individuals were enrolled in this program and received service for the year 2024
- Adults on Supervision offered naloxone upon release





Our Partners Services

- 
- ▶ The Pathfinder Network
 - ▶ Reclaiming Lives
 - ▶ Addictions Recovery Center (ARC)

Panel Q & A

Jackson County Sheriff's Office

- **Vicky Armstrong**
- **Josh Aldrich**

City of Medford Police Department

- **Rebecca Pietila**

Addictions Recovery Center

- **Ben Spence**

The Pathfinder Network

- **Leticia Longoria-Navarro**

Jackson County Community Justice

- **Kiki Parker-Rose**

Reclaiming Lives Recovery Café

- **Brandon Orr**

Connect Learning to ACTION & APPLICATION

1. An action you want to take.
2. A connection you will follow-up on
3. A resource you will bring to your community.



Thank you!

April's contact info deaglea@careoregon.org



- ❑ Head to the Ballroom for the Keynote with **Dr. Geneva Craig**
- ❑ Looking for CEUs? Visit the registration area and pick up a form to submit
- ❑ Check out: **Rogue Food Unites** pop-up farmer's market
- ❑ Share your feedback about the conference use the **QR code** on the agenda.